

# StreamBase Component Exchange (SBX®)



## OVERVIEW

The StreamBase Component Exchange (SBX®) is a Complex Event Processing (CEP) developer community enabling StreamBase CEP developers to download and distribute reusable StreamBase components.

StreamBase developers across industries and geographies can now exchange ideas and collaborate freely to build the next generation of event processing applications.

## SBX COMPONENT CATEGORIES

### ■ Adapters

Adapter components connect in-bound and out-bound event streams to the StreamBase CEP platform. For example, the *Twitter* adapter allows StreamBase to consume and produce Twitter “tweet” streams.

### ■ Integrations

Some components implement non-adapter integrations. For example, the *Calling Python from StreamBase* component allows for the integration of the Python programming language with StreamBase.

### ■ Utilities

Utility components are small operators or functions that extend the CEP platform. For example, the *Delay Operator* component defers processing an event into the future.

### ■ Domain-specific algorithms

Domain-specific algorithm components illustrate the use of common industry-specific strategies. For example, the *Options Pricing using Monte Carlo* component is available to the financial services industry and demonstrates put and call options using a Monte Carlo method.

## TESTIMONIALS



**Linden Lab** *“The StreamBase Component Exchange represents a game-changing opportunity to drive innovation in CEP technology. As active StreamBase users our developers have built nearly 100 StreamBase applications to support our operating infrastructure. We are enthusiastic members of the SBX and we are excited about being able to access components and shares ideas with other developers. We view the SBX as an important vehicle to help us improve the efficiency and productivity of our existing applications and future applications.”*  
- Brian Sullivan, Director of Data Warehousing, Linden Lab®, makers of the virtual world Second Life®



**TABB GROUP** *“CEP and open source have both seen major adoption in financial services over the past few years. CEP has helped the industry to deal with ever-increasing data volumes and complexity while open source has helped many firms to find software development efficiencies. Bringing these two ideas together into open-edge model could help drive collaborative innovation in the event processing space.”*  
- Kevin McPartland, Senior Analyst, TABB Group

## ACCESS THE SBX

Developers can download components from the SBX website at [sbx.streambase.com](http://sbx.streambase.com) or directly from within StreamBase Studio. Once downloaded, components are imported into the platform’s integrated development environment where developers can collaboratively extend their existing applications and test new ideas.

If you have any questions or comments about the SBX or if you have an idea for a new SBX component please send an email to [sbx@streambase.com](mailto:sbx@streambase.com).

SBX SAMPLE COMPONENTS AVAILABLE FOR DOWNLOAD

**Integrations**

- Flume
- MATLAB
- R
- JMX
- AMQP using RabbitMQ

**Latency Measurements**

- Caliper
- FIX Message Benchmark

**Feed Simulators**

- Market Factory
- ITCH 3.1
- Regular Expression

**Monitors**

- US Securities and Exchange Commission
- Twitter
- Earthquake
- StreamBase Server

**Adapters**

- Flume
- JMX Adapter
- Dynamic RSS
- Datasports DirectoryWatcher
- Datasports WebServiceListener
- kdb+ QDBC

**Operators**

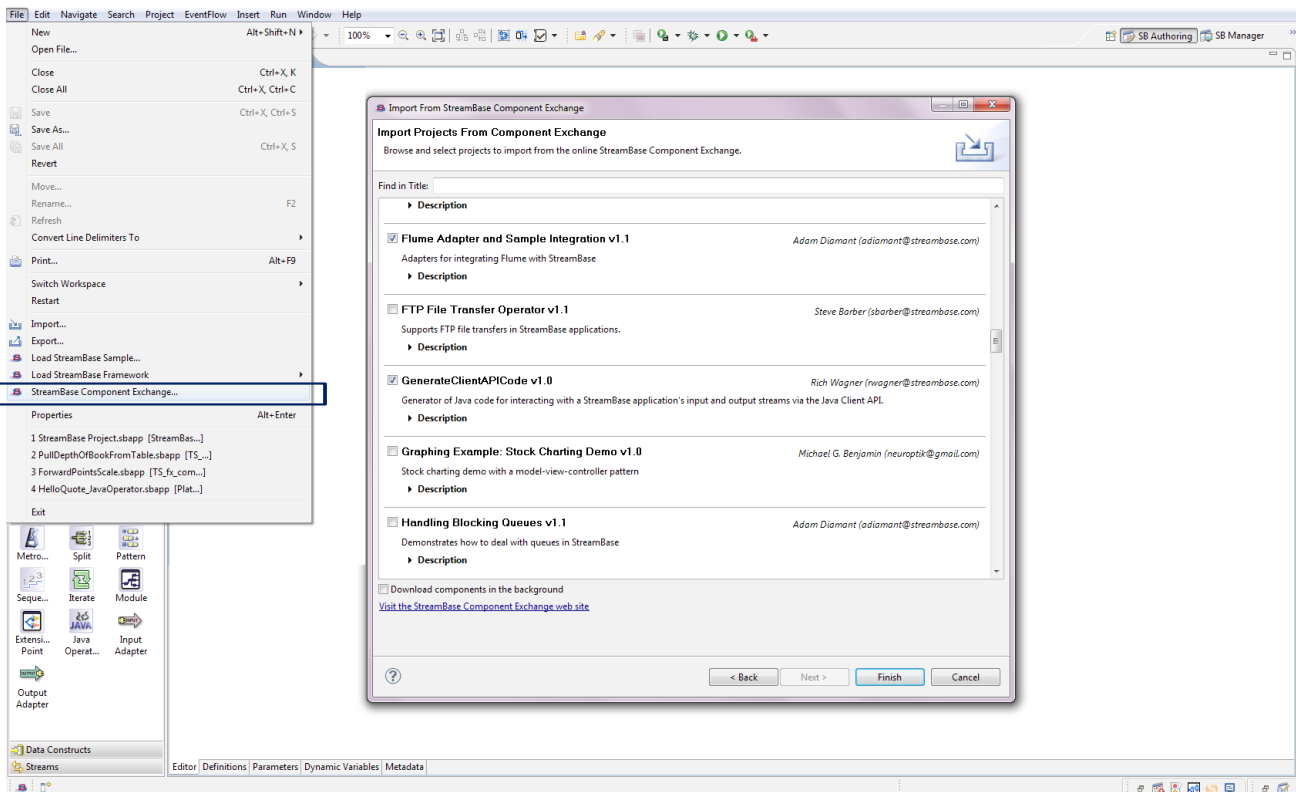
- FTP File Transfer
- Delay Operator
- Duplicate Tuple Eliminator

**Extensions**

- Unit Testing
- Client Connectivity Plug-in
- Data Cache
- Generate Client API Code

**Demos**

- NVIDIA CUDA Black Scholes
- Sentiment Analysis
- Graphing Example: Stock Charting
- Risk Management



Developers can download components from the SBX website at [sbx.streambase.com](http://sbx.streambase.com) or directly from within StreamBase Studio as shown above.

**Corporate Headquarters**  
 181 Spring Street  
 Lexington, MA 02421  
 +1 (866) 787-6227

**New York Office**  
 370 Lexington Avenue, 20th Floor, Suite 2002  
 New York, NY 10022  
 +1 (866) 787-6227

**European Headquarters**  
 60 Cannon Street  
 London, EC4N 6NP  
 +44 (0) 20 7002 1095